

Planting Native: Inspiring Pollinator- Friendly Landscapes

Ashley Gallagher, Dakota SWCD

Teresa DeMars, Rice SWCD



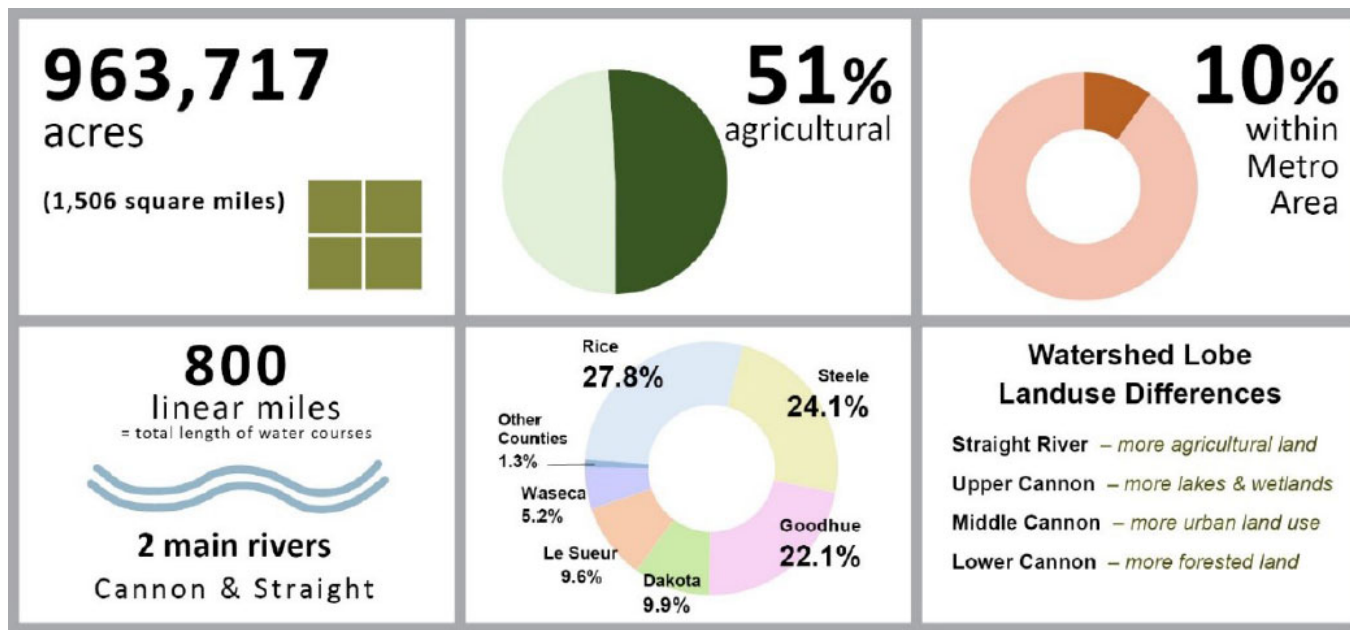


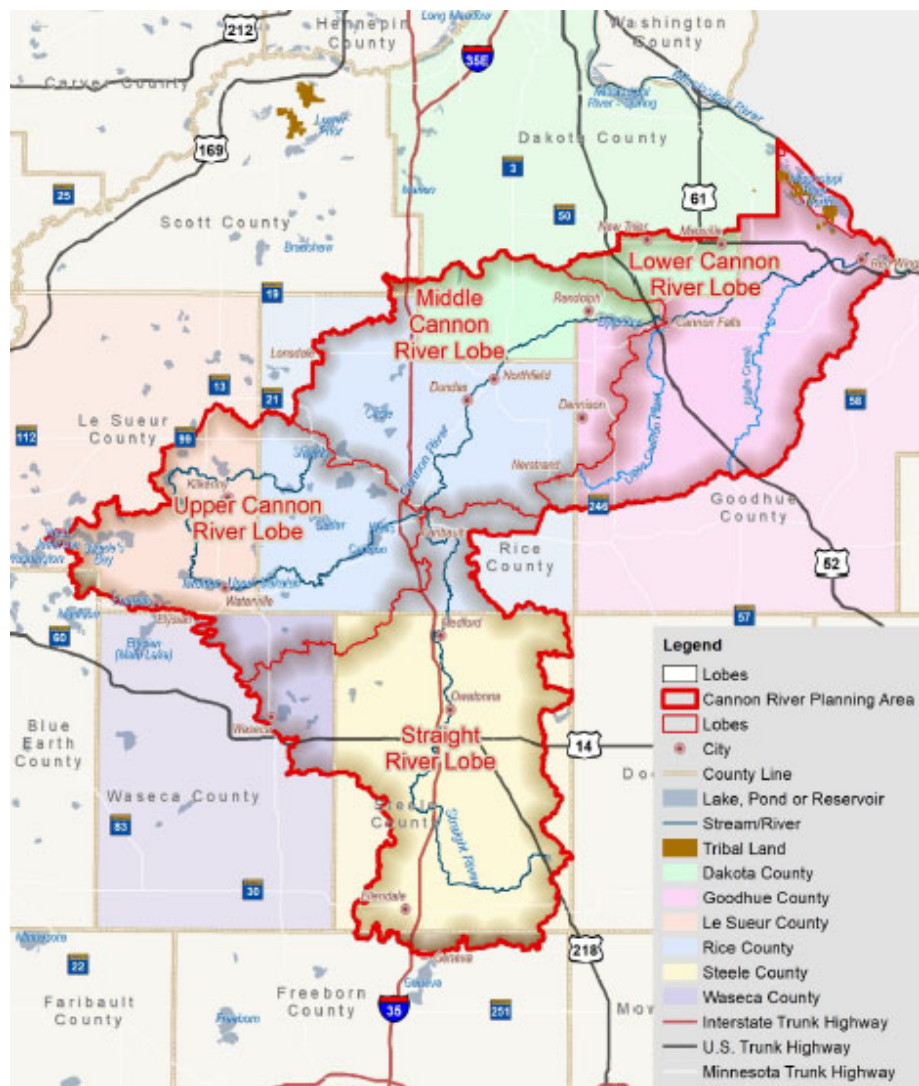
Overview

- Introduction to CRWJPO
- Why Native Plants?
- Process of a Project
 - Design
 - Install
 - Enjoy 😊
- Programs and Funding Opportunities

CRWJPO

14 entities working together to implement the Cannon River Comprehensive Watershed Management Plan







Why Native Plants?



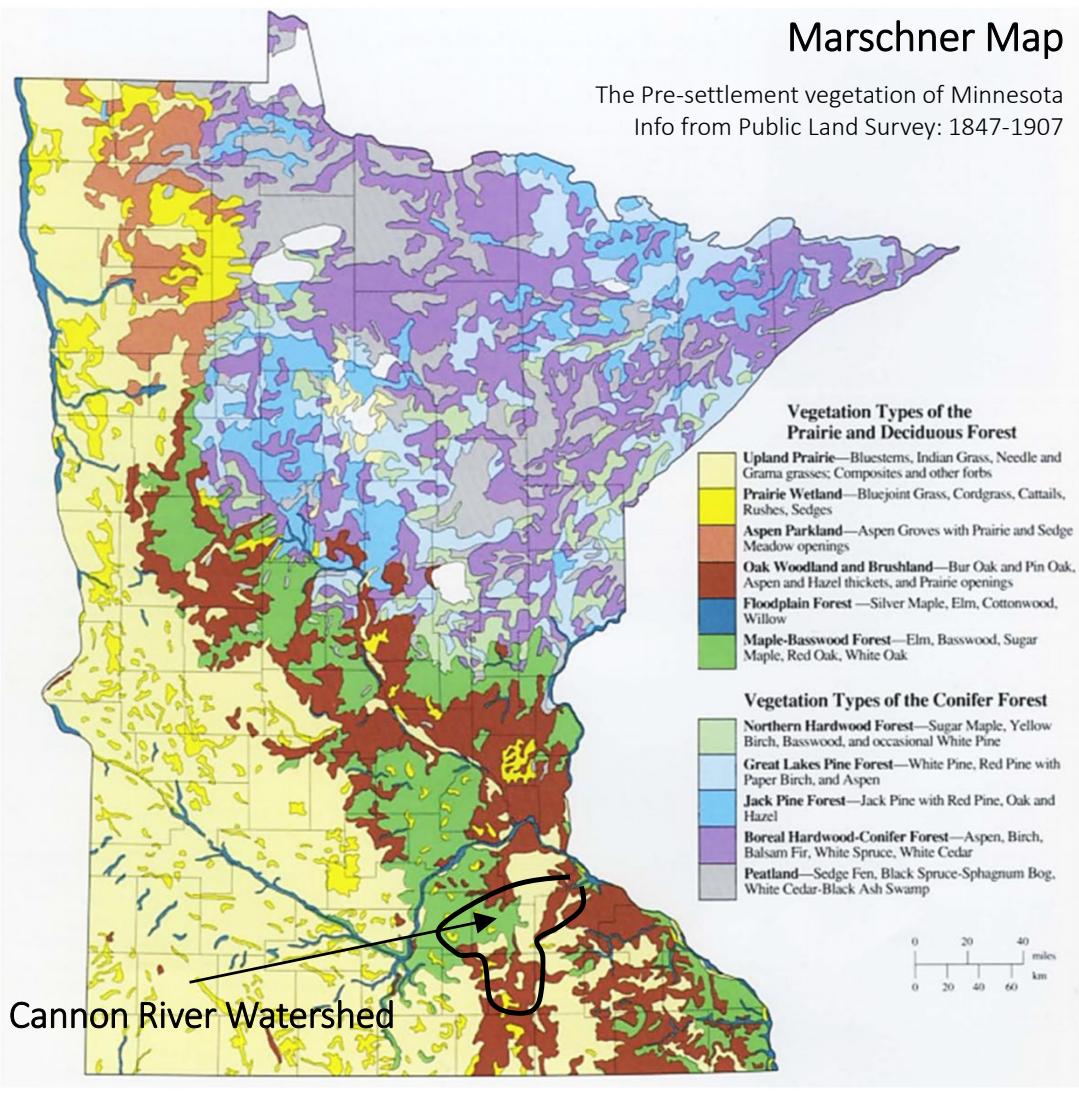


...Native Plants were
here first. . .



Marschner Map

The Pre-settlement vegetation of Minnesota
Info from Public Land Survey: 1847-1907



Pre-Settlement Native Plant Communities



Native Plant Communities – In Your Landscape!



Native Plants vs. Cultivars

Black Eyed Susan
Rudbeckia hirta



Native

- Historically grew in this environment
- Adapted to local climate
- Part of the natural plant and wildlife community
- Provide food and shelter for wildlife and insects

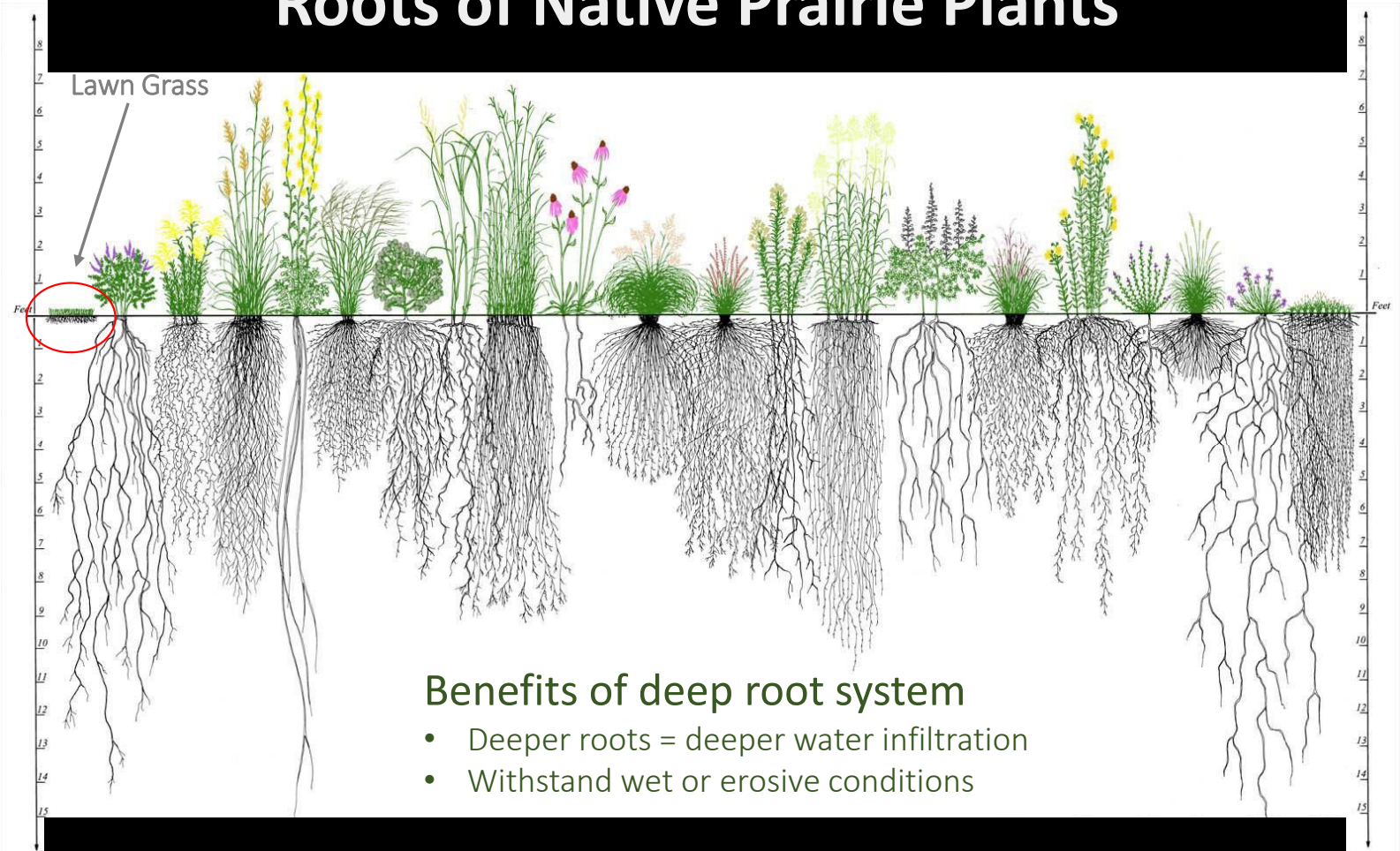
Black Eyed Susan
Rudbeckia hirta "Maya"



Cultivar

- Cultivated variety = Cultivar
- Bred from a native plant
- Selected for specific traits
 - Showy, long-lasting blooms
- Reduced nectar production, seed production, root growth
- Limited ecological benefit

Roots of Native Prairie Plants



Benefits of deep root system

- Deeper roots = deeper water infiltration
- Withstand wet or erosive conditions

Host Plants



Butterfly Milkweed

Asclepias tuberosa



Meadow Blazing Star

Liatris ligulistylis

Native Plants Come In All Colors, Shapes, & Sizes!

Ox-eye Sunflower



Purple Coneflower



Turtlehead



Blue False Indigo

Process of a Project



Resources...

Lawns to
Legumes

Butterfly
and Bee
Habitat
Fund

Conservation
Reserve
Program

Native
Plant Sales

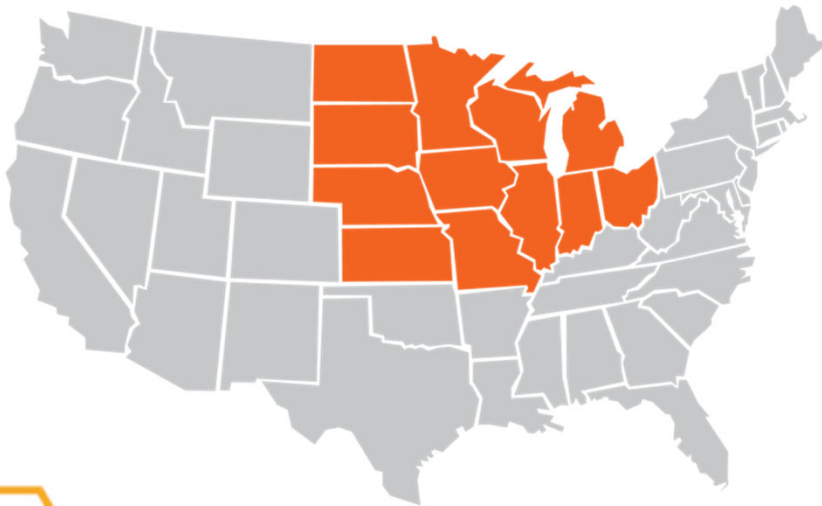
Pheasants
Forever

Lawns to Legumes



- Statewide
 - Rusty Patch Bumble Bee Priority Areas
- Up to \$350 with 25% match
- Resources online
- Coaching available

Butterfly and Bee Habitat Fund



- Minimum of 2 acres, Max 25 acres
- Provide seed at no cost
- 5-year agreement
- Assistance on site prep and maintenance



**The Bee & Butterfly
Habitat Fund**
A NextGen Conservation Solution

Conservation Reserve Program (CRP)



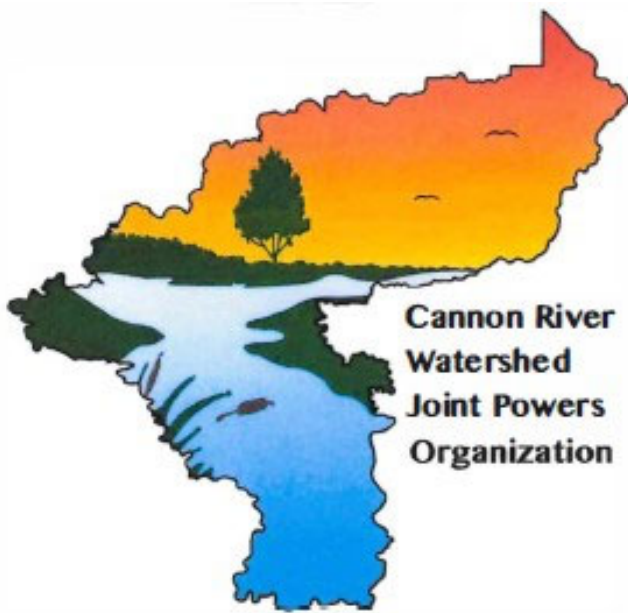
- Must have cropping history
- General or Continuous signup
- 10, 15 or 30-year contracts
- Payment for establishment
- Annual 'rental' payment

Pheasants Forever



- Varies by Chapter
- Nesting Cover
- Up to 50%

Cannon River Watershed JPO



- Coming Soon –
Native Shoreline Plantings!

Resources...

And
More!

Native
Plant Sales

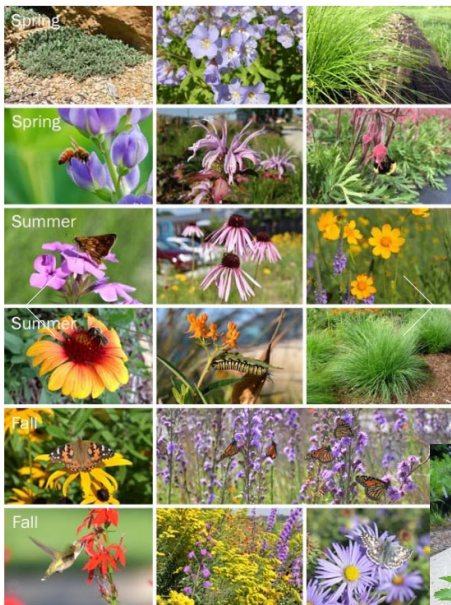
Butterfly
and Bee
Habitat
Fund

Lawns to
Legumes

Conservation
Reserve
Program

Pheasants
Forever

Native Plant Sales



- SWCDs
- Suppliers
- Farmers Markets
- Wild Ones Chapters
- GROWS
- Master Gardeners

Books



Networking

- GROWS
- Wild Ones
- Master Gardeners
- Facebook Groups



Thank you!

Next Virtual Sessions:

Park the Plow: Benefits of No-Till
November - *November 20th*

Gifts of Green: the Rewards of
Planting Trees – *December 18th*

