

# Cannon River Watershed Joint Powers Organization

Kourtney Spitzack  
Le Sueur County SWCD  
Outreach Specialist

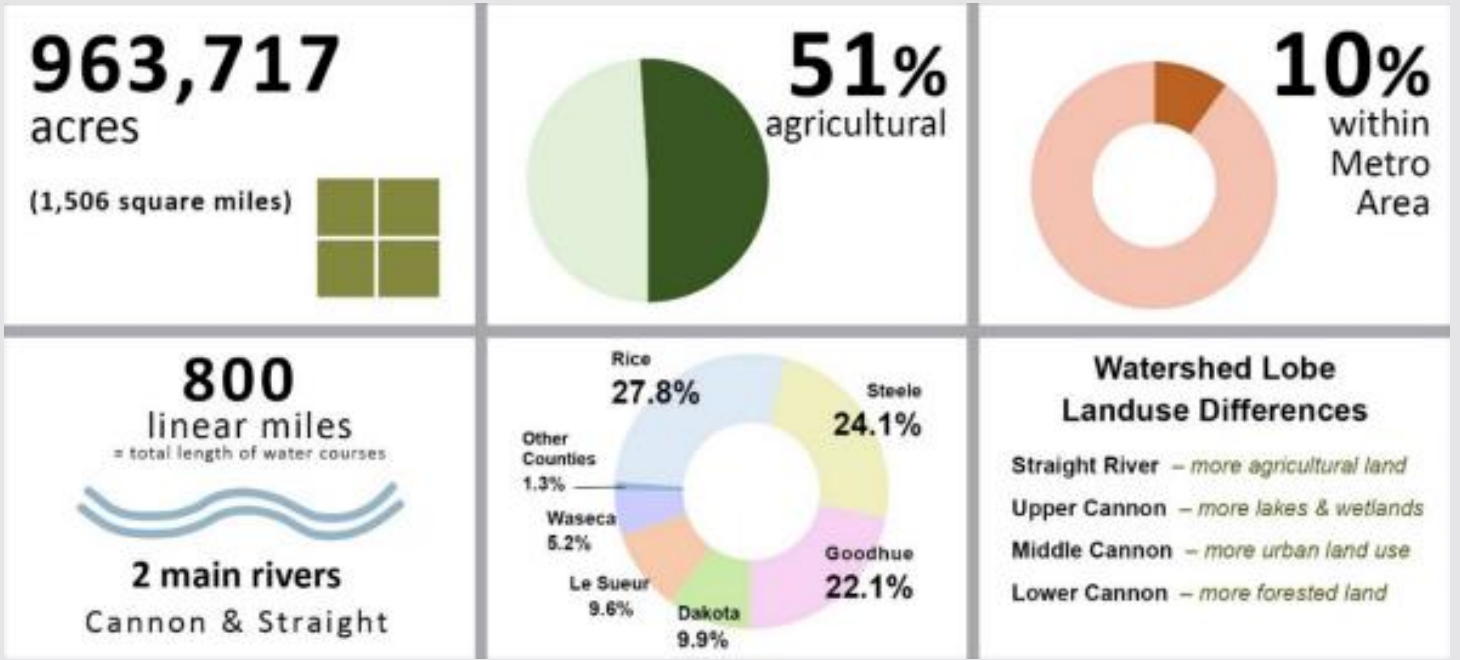
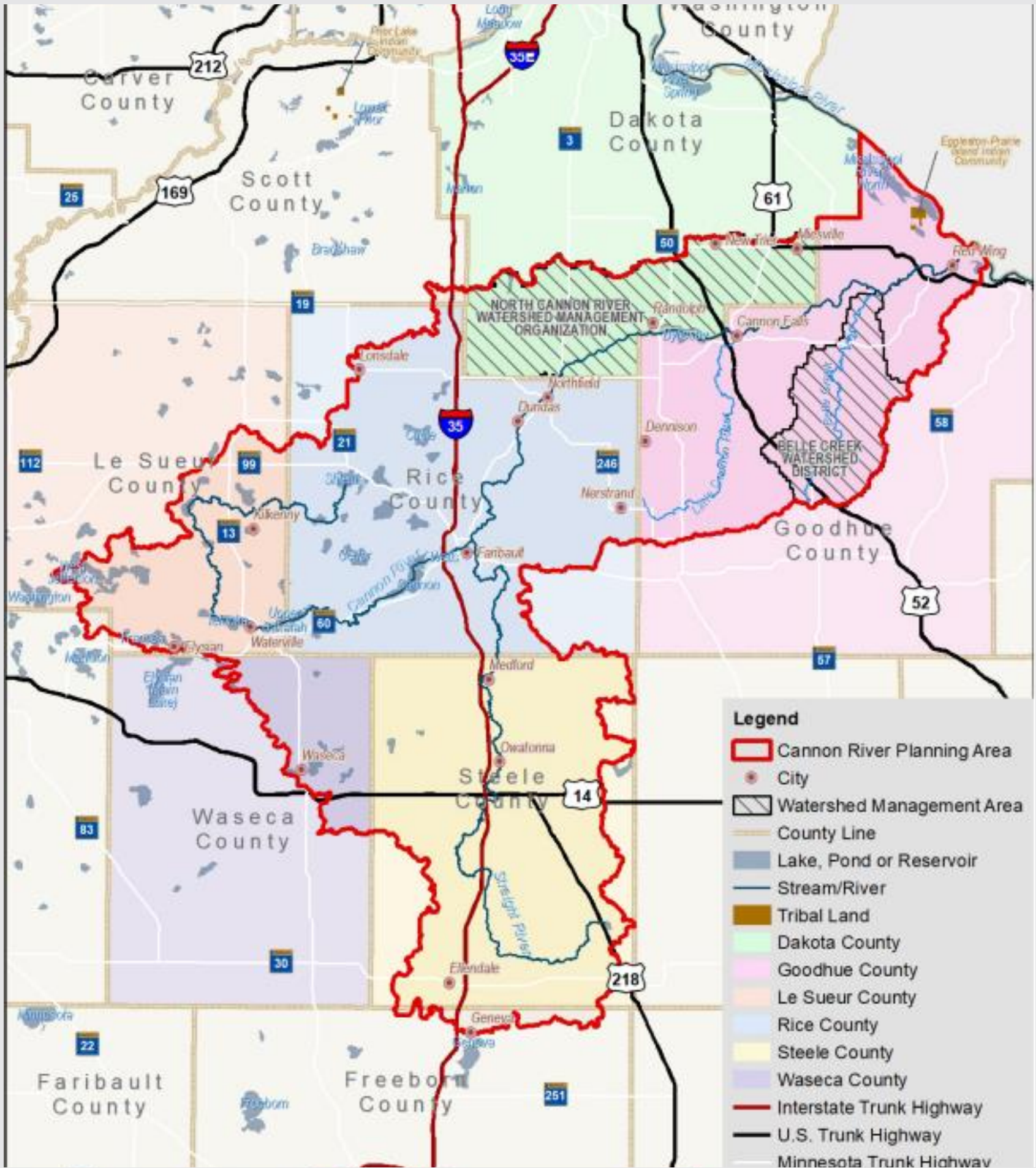


**Cannon River  
Watershed  
Joint Powers  
Organization**

# The Cannon River Watershed

The Cannon River Watershed includes portions of the following counties:

- Dakota
- Goodhue
- Le Sueur
- Rice
- Steele
- Waseca



# CRWJPO Example Projects

## Non-Structural:

- Cover Crops
- Reduced Tillage
- Soil Health
- Nutrient Management
- Perennial Cover
- Perennial Crops
- Preconstruction cover
- Feedlots
- Grazing
- Native Shoreline Plantings

## Structural:

- Water and Sediment Control Basins (WASCOB)
- Grassed Waterways
- Terraces
- Grade Stabilizations





**ON TO THE NEXT  
PRESENTATION!**





**PROTECTING WATER QUALITY  
IN LAKES & STREAMS**

# Pet Waste: Do you Scoop the Poop?

Improperly disposed of pet waste is one of the most common pollutants found in urban lakes, ponds and streams. It can pollute these waters by nutrients and pathogens. When pet waste ends up in waterbodies, it will decompose and release nutrients into the water. This can cause an excessive growth of algae and weeds, which impacts water quality. Here are three things that you can do to help lessen the impact on local waterbodies.

01

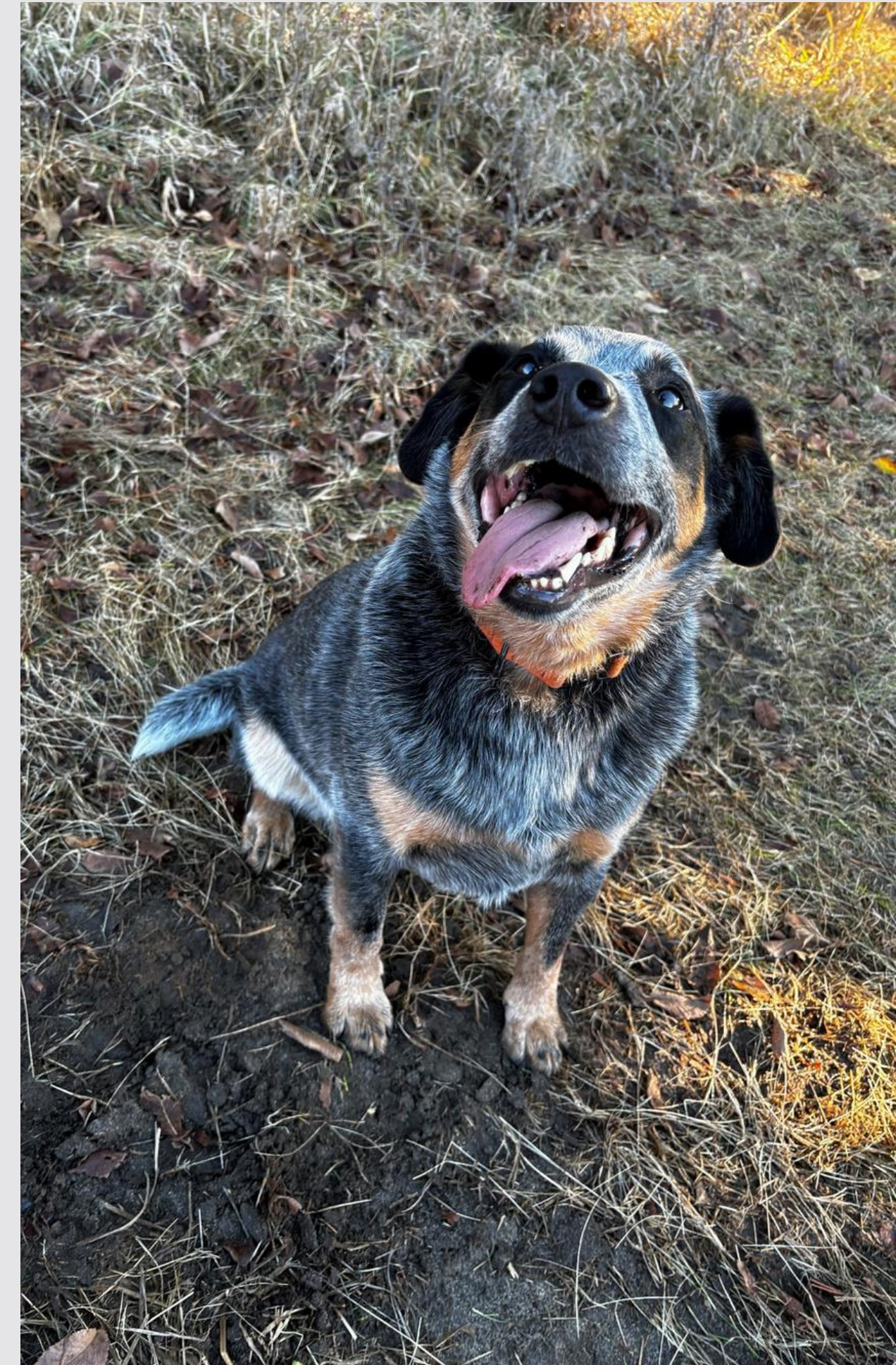
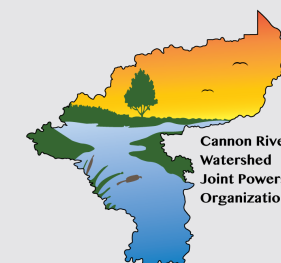
Place your pet waste in the trash. This is one of the most convenient ways to deal with pet waste in your yard or community.

02

Bury it in your yard. If you do bury it, make sure it is done away from gardens and any water body or source of drinking water. The hole should be about 5 inches deep. Microorganisms in the soil will break down the waste and release nutrients back to nearby plants.

03

Flush it down the toilet. The used water from your toilet goes to a sewage treatment plant or septic system. The processes remove most of the pollutants in feces before the water reaches a water body. Don't try to flush debris like cat litter, sticks or rocks down the toilet. Used litter should be placed securely in a bag and put in the trash.





# Maintaining Septic Systems

- 01** Inspect your septic system and pump it frequently
- 02** Use water efficiently - High efficiency toilets, showerheads and washing machines.
- 03** Properly dispose of waste - everything that you pour down the sink, shower, bath, or toilet ends up in your septic system
- 04** Maintain your drainfield - don't park or drive on it, ask a service professional about what trees plant near it, and keep excess water away from your drainfield (i.e. sump pumps, roof drains, etc.)

# Natural Shoreline Restoration

Natural Shorelines have many benefits, including:

- 01 Improved water quality
- 02 Reduced erosion
- 03 Habitat for wildlife
- 04 Storm protection
- 05 Carbon storage
- 06 Aesthetic value
- 07 Property value
- 08 Cost savings

## COST SHARE

Shoreland owners are eligible for \$500 per parcel for a minimum 150 sq foot of native vegetation. Contracts must go through your local SWCD Board prior to planting or seeding.



Forms can be found online at:  
[cannonriverwatershedmn.gov/costshareincentives](http://cannonriverwatershedmn.gov/costshareincentives)  
or scan the QR code for the website







# Cost Share Opportunities - CRWJPO

## NON-STRUCTURAL PROJECTS

- Cover Crops\*
  - single species: \$35 - \$45 per acre
  - multiple species: \$40 - \$50 per acre
- No-Till/Strip-Till\*
  - rotational no-till/strip-till: \$8 - \$18 per acre
  - continuous no-till/strip-till: \$10 - \$20 per acre
- Soil Health: must do no-till/strip-till and cover crops on same acres each year\*
  - varies \$10 - \$20 per acre
- Perennial Cover\*
  - non-harvestable: \$150 - \$250 per acre
  - harvestable: \$100 - \$200 per acre
- Perennial Crops: varies \$20 - \$30 per acre\*
- Preconstruction Cover: \$150 per acre up to 10 acres

## STRUCTURAL PROJECTS\*

- Level 1 (Prioritized Targets Implementation Area): Maximum of 95%
- Level 2 (Targeted Drainage Area): Maximum of 85%
- Level 3 (Priority Area): Maximum of 75%

***\*Funding level is dependent on location in watershed***





SWCD

NRCS

# Cost Share Opportunities

View each Soil & Water Conservation District's website for information on their own structural and non-structural practices.

**DAKOTA**

[www.dakotawcd.org](http://www.dakotawcd.org)

**GOODHUE**

[www.goodhueswcd.org](http://www.goodhueswcd.org)

**LE SUEUR**

[www.lesueurwcd.org](http://www.lesueurwcd.org)

**RICE**

[www.riceswcd.org](http://www.riceswcd.org)

**STEELE**

[www.steeleswcd.org](http://www.steeleswcd.org)

**WASECA**

[www.wasecaswcd.org](http://www.wasecaswcd.org)

## **Environmental Quality Incentives Program (EQIP)**

Voluntary federal program that provides financial and technical assistance to producers that address resource concerns.

## **Conservation Stewardship Program (CSP)**

Federal program that helps build up a producer's existing conservation efforts, while strengthening their current operation.






**Cannon River  
Watershed  
Joint Powers  
Organization**



# Contact Us

Reach out to your local Soil & Water Conservation District (SWCD) or County to find out more about cost-share opportunities for your land in the Cannon River Watershed.

 [www.cannonriverwatershedmn.gov](http://www.cannonriverwatershedmn.gov)

-  Dakota SWCD: 651-480-7777
- Goodhue SWCD: 651-923-5286
- Le Sueur SWCD: 507-419-0365
- Rice SWCD: 507-332-5408
- Steele SWCD: 507-451-6730
- Waseca SWCD: 507-835-0603



**THANK YOU**

A N Y Q U E S T I O N S ?