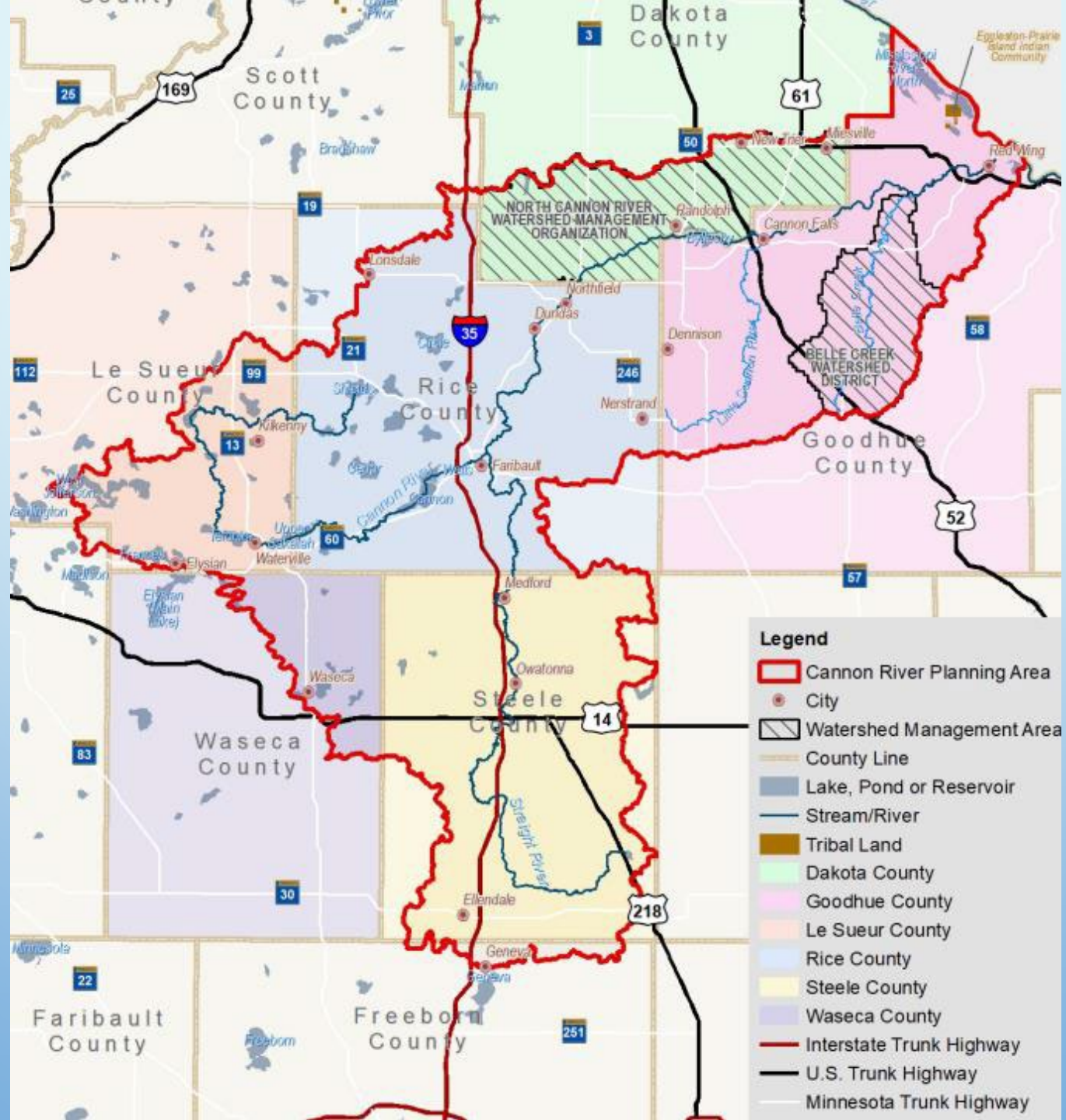


CANNON RIVER WATERSHED JOINT POWERS ORGANIZATION





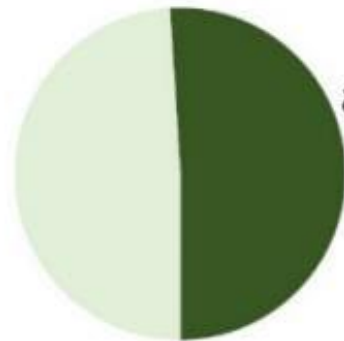
Legend

- Cannon River Planning Area
- City
- Watershed Management Area
- County Line
- Lake, Pond or Reservoir
- Stream/River
- Tribal Land
- Dakota County
- Goodhue County
- Le Sueur County
- Rice County
- Steele County
- Waseca County
- Interstate Trunk Highway
- U.S. Trunk Highway
- Minnesota Trunk Highway

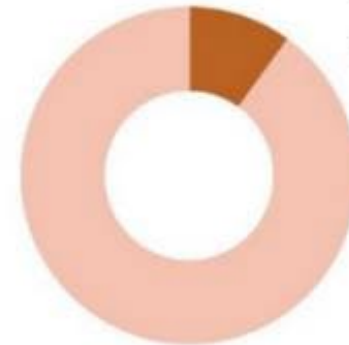
Cannon River Watershed

963,717
acres

(1,506 square miles)



51%
agricultural



10%
within
Metro
Area

800

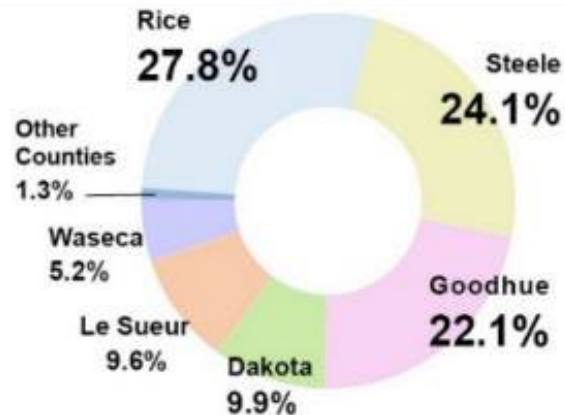
linear miles

= total length of water courses



2 main rivers

Cannon & Straight



Watershed Lobe Landuse Differences

- Straight River** – *more agricultural land*
- Upper Cannon** – *more lakes & wetlands*
- Middle Cannon** – *more urban land use*
- Lower Cannon** – *more forested land*

PROJECTS IN THE WATERSHED FIXING EROSION



EROSION CONTROL



Grassed waterway



Water & Sediment Control Basin



Cover Crops



Conservation Tillage

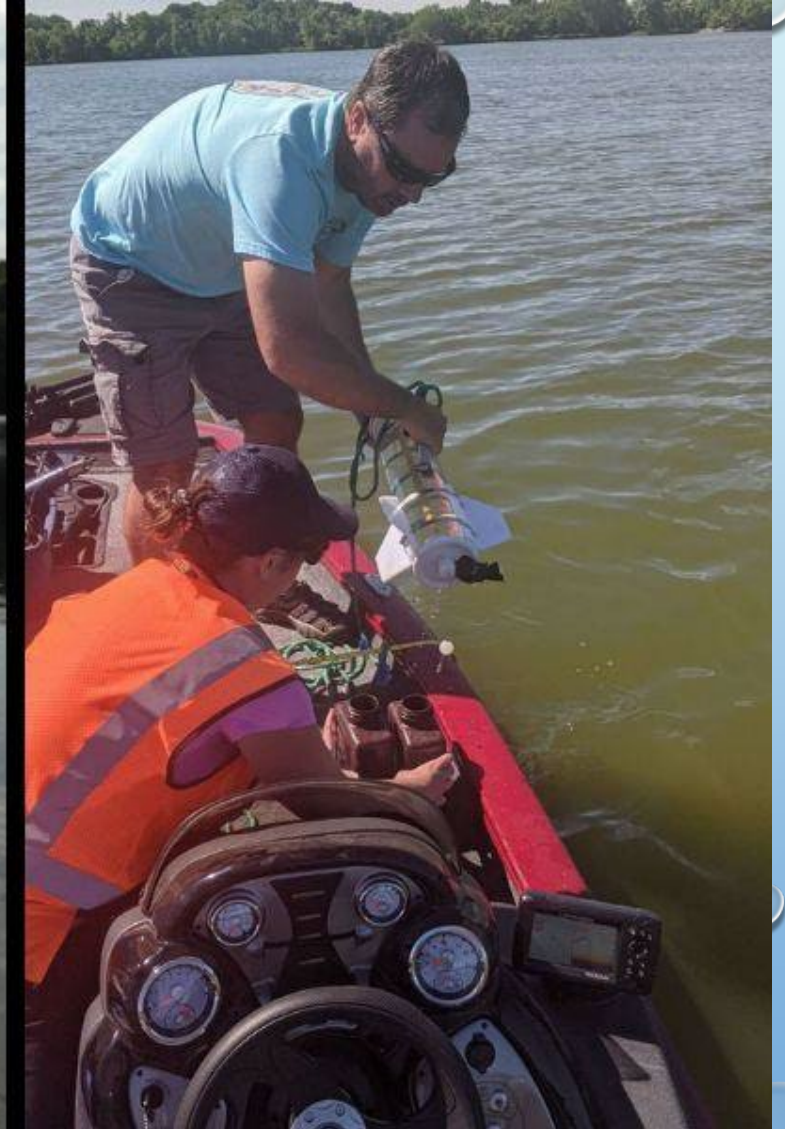
OUTREACH & EDUCATION



WATER QUALITY IMPROVEMENT OF LAKES & RIVERS



- Shoreline surveys
- Septic Inventories
- Develop Lake Management Plans
- Assist with monitoring and testing



SHORELINE RESTORATIONS AND HELPING POLLINATORS



BYLLESBY DAM, CANNON FALLS MN

