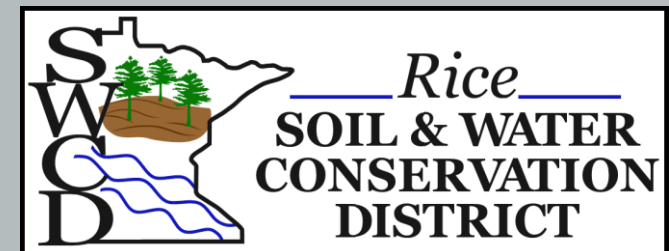
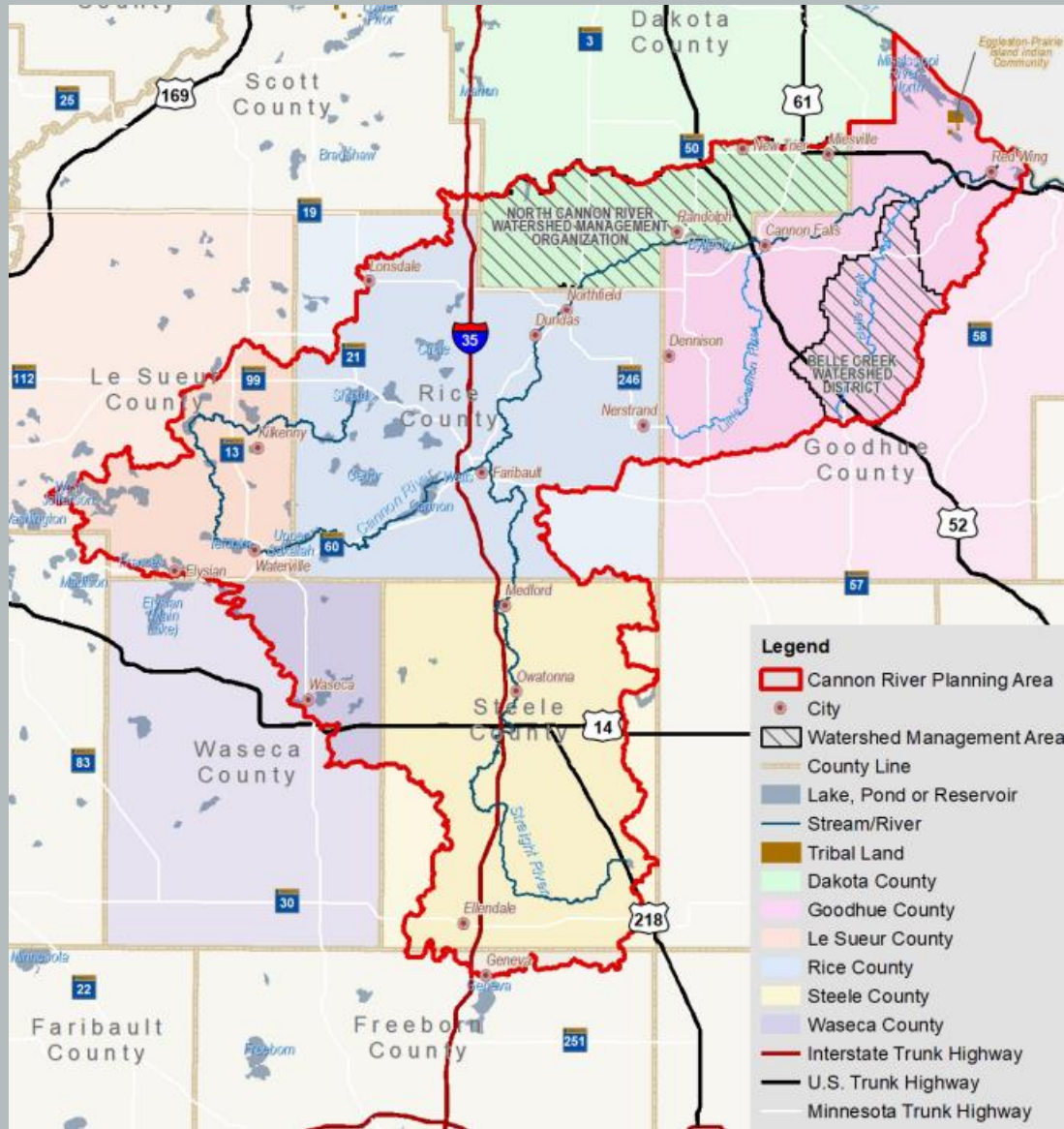


TALKING TO YOUR RENTER ABOUT SOIL CONSERVATION

Teresa DeMars, Rice SWCD
Claire LaCanne, University
of Minnesota Extension



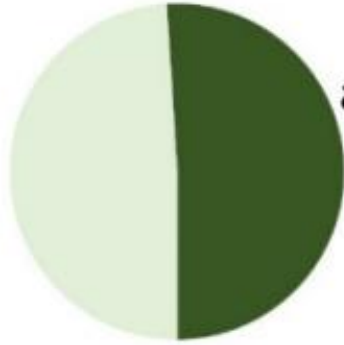


963,717
acres

(1,506 square miles)



51%
agricultural



10%
within
Metro
Area



800

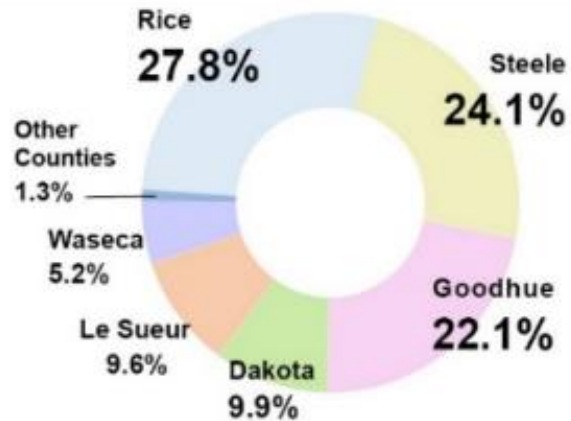
linear miles

= total length of water courses



2 main rivers

Cannon & Straight



Watershed Lobe Landuse Differences

Straight River – *more agricultural land*

Upper Cannon – *more lakes & wetlands*

Middle Cannon – *more urban land use*

Lower Cannon – *more forested land*



Common Soil Erosion in Rice County

Wind Erosion

Fix: Conservation Tillage and Cover Crops



Common Soil Erosion in Rice County

Sheet Erosion

Fix: Conservation Tillage and Cover Crops



Common Soil Erosion in Rice County

Rill Erosion

Fix: Conservation Tillage and Cover Crops



Common Soil Erosion in Rice County



Gully Erosion

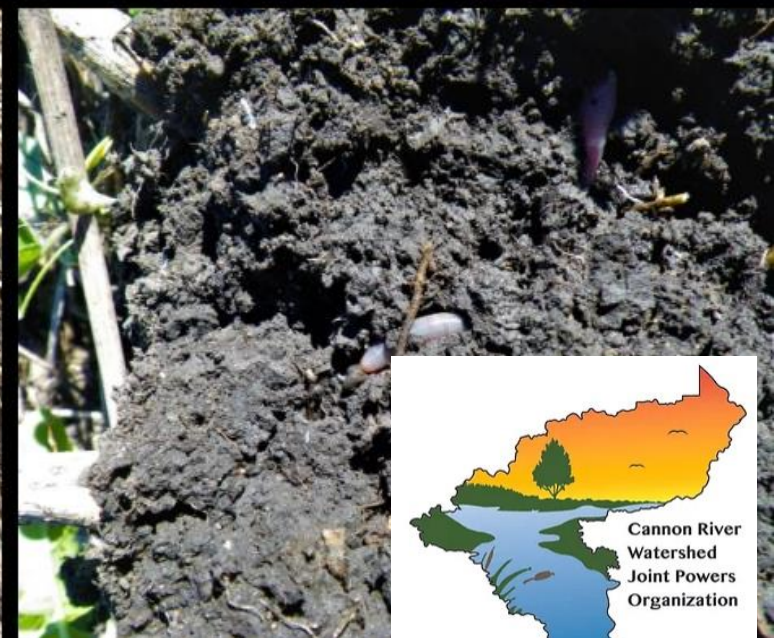
Fixes:

1. Grassed Waterway
2. Conservation Tillage and Cover Crops
3. Water & Sediment Control Basin



Benefits of Cover Crops and Conservation Tillage

1. Reduces Compaction
2. Improved infiltration
3. Erosion Control
4. Weed Suppression
5. Grazing Potential
6. Increases Organic Matter
7. Living root holds onto nutrients (nitrogen)
8. Soil Biology increases



Barriers to Soil Conservation

Cost

Cover Crops = \$55/acre, for an 80-acre field
\$4,400 (includes seed cost, planting and
termination)

Sediment basin = \$4,000

Grassed Waterway = \$4,300 for a 1000 ft
grassed waterway

Strip Till Machine = \$150,000 - \$230,000
(used)

Cover Crop Interseeder = \$15,000

Complete Change in Management: a lot of
variables like the weather, planting method,
termination method, societal pressure.



Rice SWCD Custom Interseeding Program



*We will supply the seed mix
and custom apply it to your field!*

READY FOR 2022 PLANTING!



Rice SWCD Cover Crop Incentive Program

Sign up now for the 2023 crop season!

- Rate is \$35 per acre for single species, and \$40 per acre for multi-species mixes (up to \$120 per acre over three years)
- Contracts are for three consecutive years
- Eligibility: Must be on land without a history of cover crops (no more than 3 years in the last 10), and follow NRCS guidelines for rates and timing.
- Funds are limited, so act now!



Local Conservation Programs

- **SWCDs-** No-Till Drill, Cover Crop Incentives
- **Cannon River Watershed Joint Powers Organization-** Cover Crops, Conservation Tillage, Structural Conservation Practices

State Conservation Programs

- **Ag Water Quality Certification Program-** Cover Crops, Conservation tillage, Structural Conservation Practices
- **State Cost Share-** Structural Conservation Practices
- **Best Management Practices Low Interest Loan Program-** Loans for equipment, practices

Federal Conservation Programs

- **Environmental Quality Incentives Program-** Cover Crops, Conservation tillage, Structural Conservation Practices
- **Conservation Stewardship Program-** Cover Crops, Conservation tillage, Structural Conservation Practices
- **Conservation Reserve Program-** easement payments for taking Highly Erodible land out of production

Non-Profit Conservation Programs

- **Clean River Partners-** Cover Crops
- **Practical Farmers of Iowa-** Cover Crops

Private Conservation Programs

- **Examples include Land o Lakes, Bayer, General Mills**
- **Carbon credits programs or pays premiums for grains that are organic or regeneratively produced**





On Farm Visit

- Discuss conservation needs
- With you alone or with you and your renter



Soil & Water
Conservation Districts